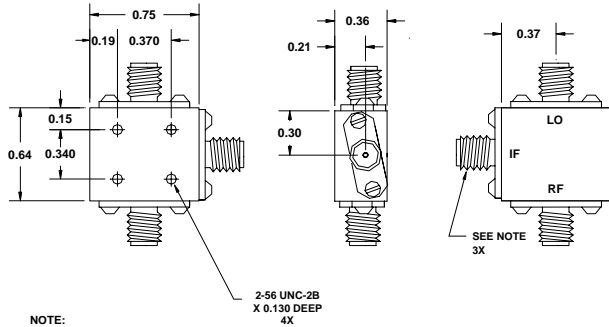


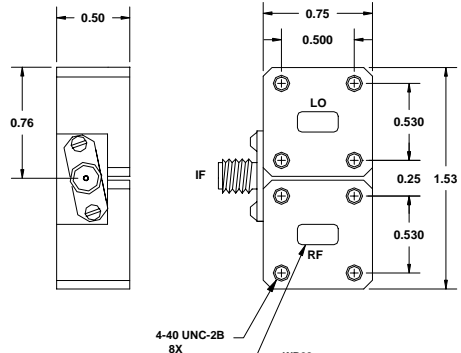
MX SERIES



NOTE:
SMA FEMALE UP TO 26.5 GHz
K-F FOR Ka BAND

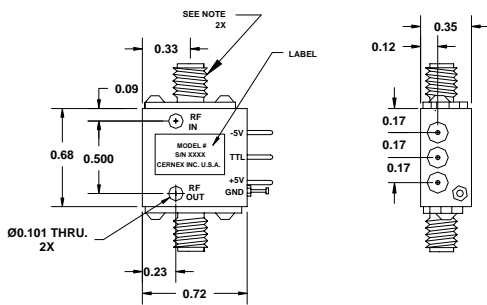
MX SERIES

with WAVEGUIDE CONNECTORS



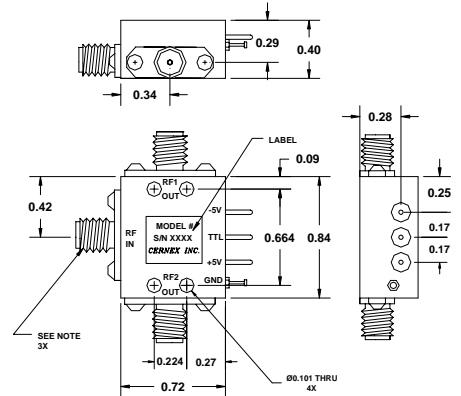
NOTE:
SMA FEMALE UP TO 26.5 GHz
K-F FOR Ka BAND

SW1



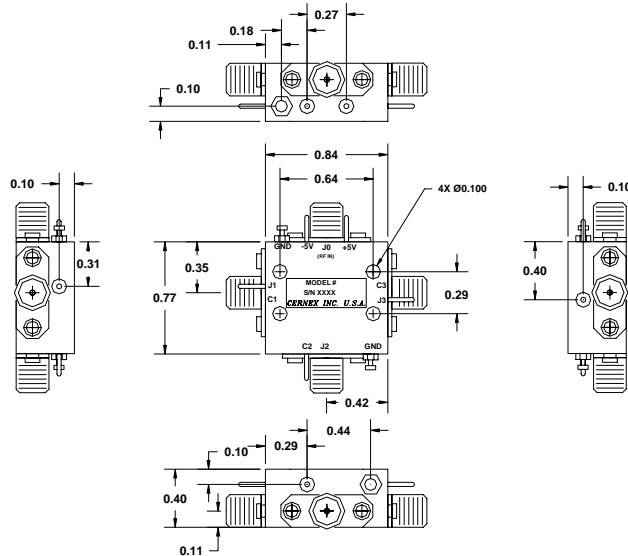
NOTE:
SMA FEMALE UP TO 26.5 GHz
K-F FOR Ka BAND

SW2 (A&B)



NOTE:
SMA FEMALE UP TO 26.5 GHz
K-F FOR Ka BAND

SW3



NOTE:
SMA FEMALE UP TO 26.5 GHz
K-F FOR Ka BAND