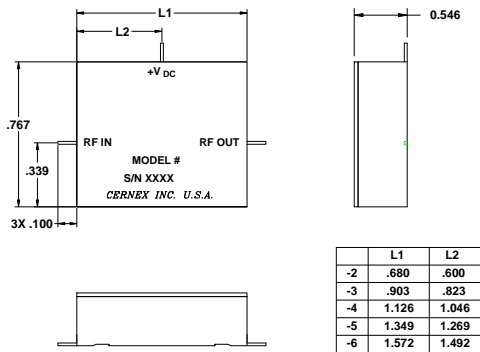
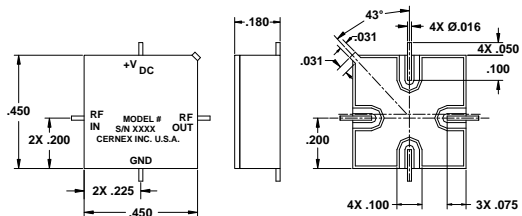


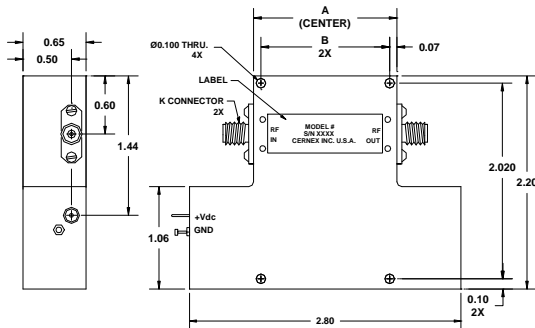
## CSM Series



## CSK Series



## CKP Series with COAXIAL CONNECTORS



CASE TYPE	DIMENSIONS	
	A	B
CKP4	1.26	1.105
CKP5	1.48	1.330
CKP6	1.70	1.555
CKP7	1.93	1.780

## CKP Series with WAVEGUIDE CONNECTORS

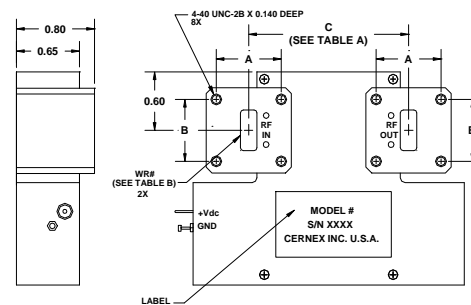


TABLE A	
	C
CKP4	1.4
CKP5	1.7
CKP6	1.9
CKP7	2.1

TABLE B		
WR#	A	B
WR42	.67	.64
WR34	.67	.64
WR28	.53	.50
WR22	.53	.50
WR19	.53	.50