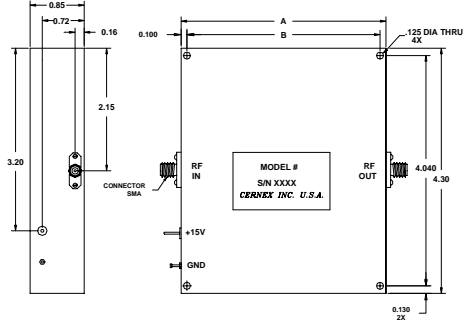
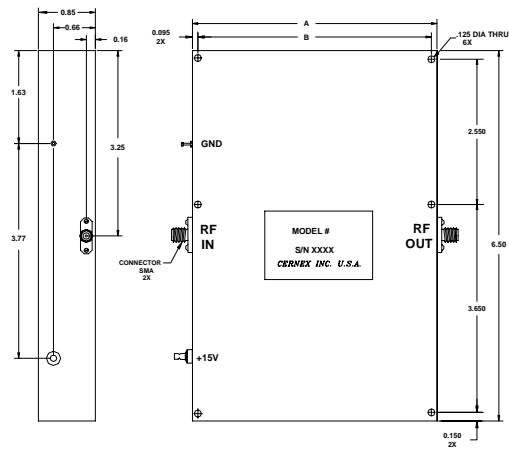


## ONC Series



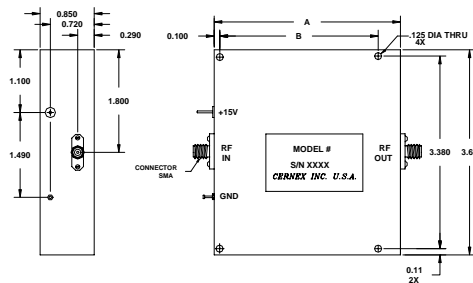
CASE TYPE	DIMENSIONS	
	A	B
ONC13	3.30	3.112
ONC14	3.53	3.336
ONC15	3.76	3.565
ONC16	3.97	3.784

## PNC Series



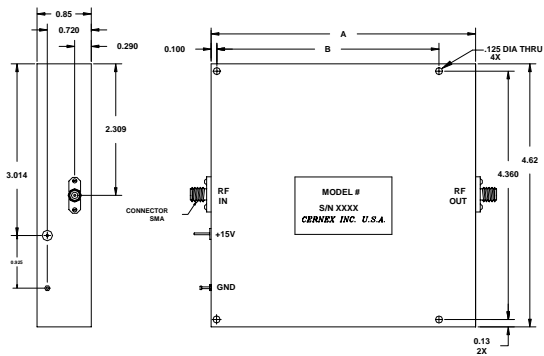
CASE TYPE	DIMENSIONS	
	A	B
PNC17	4.20	4.011
PNC18	4.42	4.236
PNC19	4.65	4.463
PNC20	4.87	4.680

## QND Series



CASE TYPE	DIMENSIONS	
	A	B
QND8	3.27	2.780
QND9	3.50	3.005
QND10	3.72	3.230
QND11	3.95	3.455

## OND Series



CASE TYPE	DIMENSIONS	
	A	B
OND12	4.19	3.450
OND13	4.42	3.675
OND14	4.64	3.900
OND15	4.87	4.125