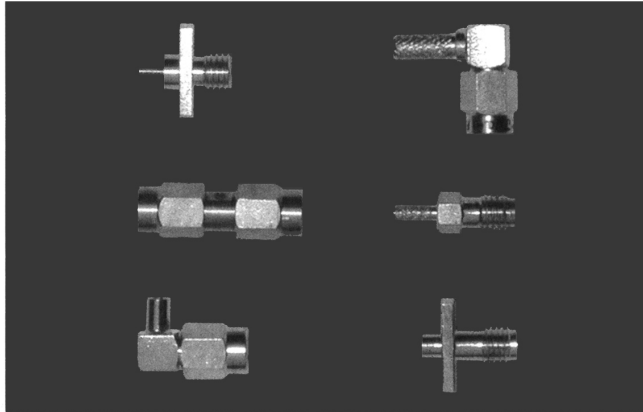


**SERIES SSMA
RF COAXIAL CONNECTORS**



Series SSMA is the first selection for use in millimeter applications. The size is smaller than SMA series while the structure is similar. The SSMA connector is recommended for use up to 40 GHz.

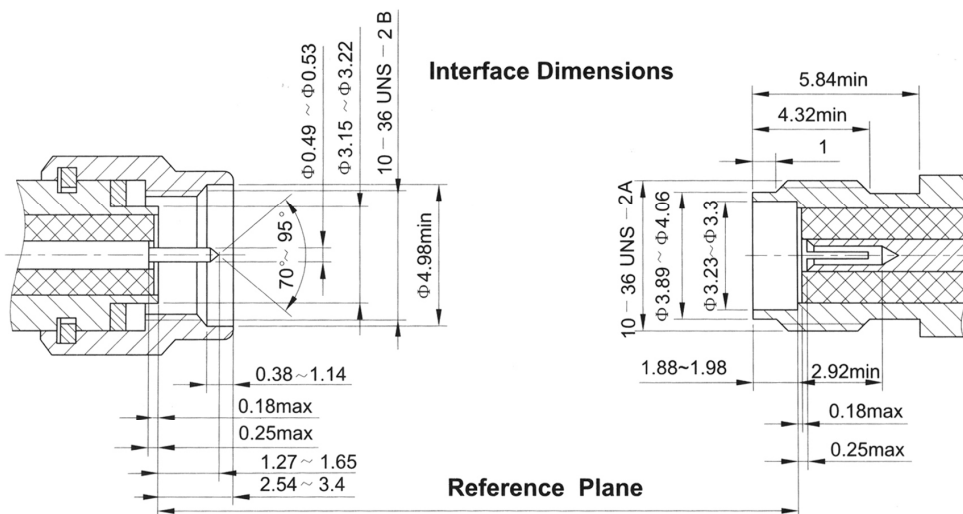
Key performance

- Characteristic Impedance : 50 Ω
- Frequency range : 0~40GHz
- Contact resistance :
 - Center conductor ≤ 5.0m Ω
 - Out conductor ≤ 2.50m Ω
- Insulation resistance : ≥ 1000M Ω
- Insulator voltage withstanding : 750V
- VSWR : ≤ 1.07 + 0.04√f(GHz)
- Connector durability : 500 cycles

Applicable spec/std : GJB681A(MIL-C-39012)

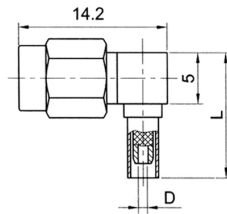
Material

- Center contacts:
 - Male---brass, gold plated.
 - Female---beryllium copper, gold plated
- Bodies and other metal parts:
 - brass, gold plated
- Insulators: Teflon
- Crimp ferrule: copper, nickel plated.
- Gasket and seal rings: silicone rubber
- Heat-shrink tubing: thermofit plastic.

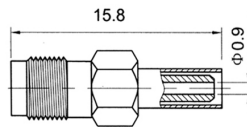


SSMA SERIES

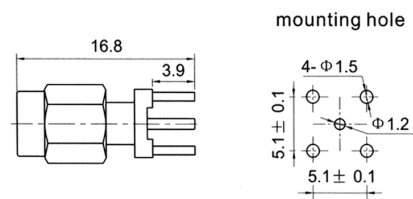
CERNEX, Inc.



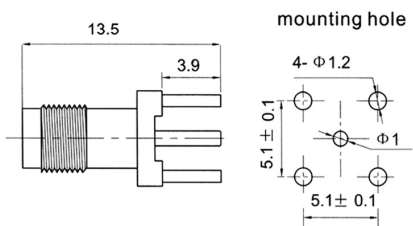
Type	part number	suitable cable	L	D	Note
SSMA-JW2	0930-6500	2	12.3	Φ0.9	
SSMA-JW3	0930-6501	3	12.9	Φ1.6	



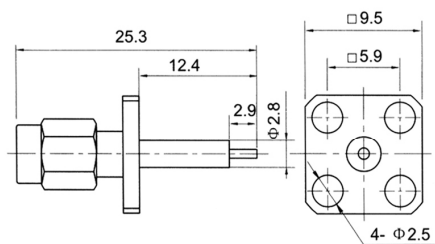
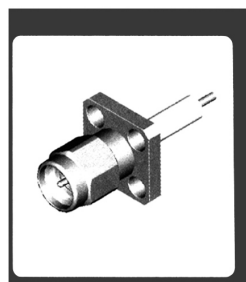
Type	part number	suitable cable	Note
SSMA-K2	0920-6500	2	



Type	part number	Note
SSMA-JHD	0910-5800	



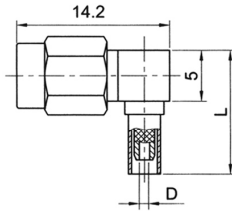
Type	part number	Note
SSMA-KHD	0920-5800	



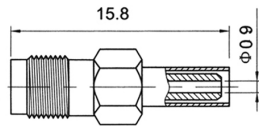
Type	part number	Note
SSMA-JFD	0910-0000	

SSMA SERIES

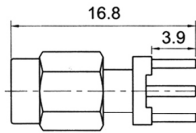
CERNEX, Inc.



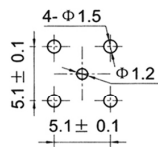
Type	part number	suitable cable	L	D	Note
SSMA-JW2	0930-6500	2	12.3	Φ0.9	
SSMA-JW3	0930-6501	3	12.9	Φ1.6	



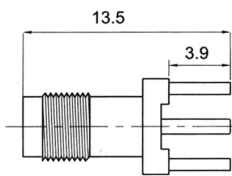
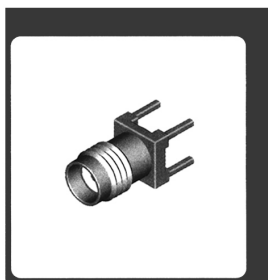
Type	part number	suitable cable	Note
SSMA-K2	0920-6500	2	



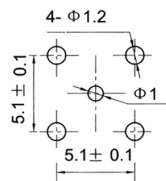
mounting hole



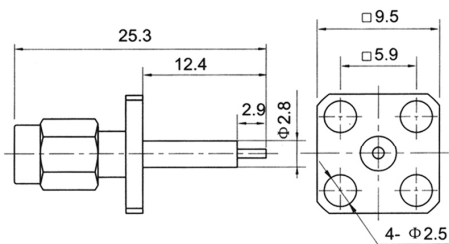
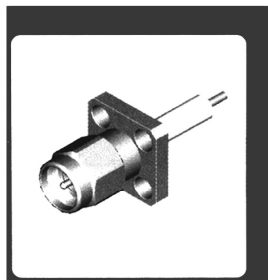
Type	part number	Note
SSMA-JHD	0910-5800	



mounting hole



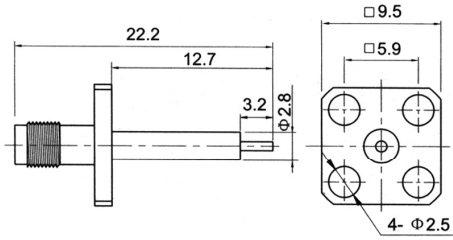
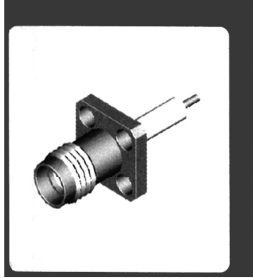
Type	part number	Note
SSMA-KHD	0920-5800	



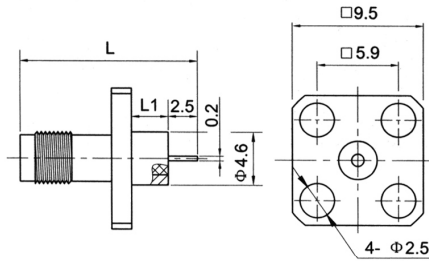
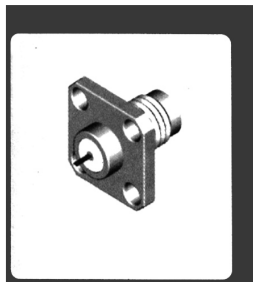
Type	part number	Note
SSMA-JFD	0910-0000	

SSMA SERIES

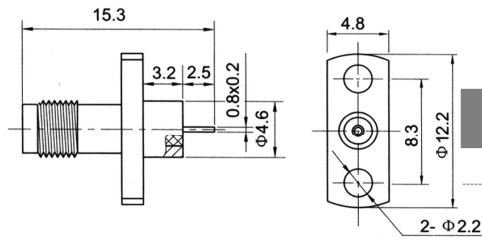
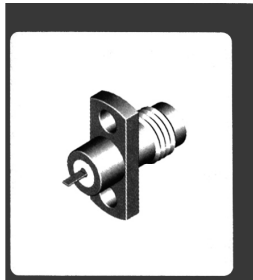
CERNEX, Inc.



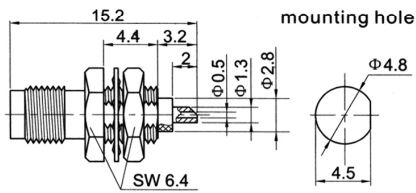
Type	part number	Note
SSMA-KFD	0920-0000	



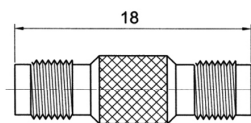
Type	part number	L	L1	Note
SSMA-KFD1	0920-0001	14.3	2.4	
SSMA-KFD2	0920-0002	15.3	3.2	
SSMA-KFD3	0920-0003	16.9	4.8	



Type	part number	Note
SSMA-KFD4	0920-0004	



Type	part number	Note
SSMA-KYD	0910-2800	



Type	part number	Note
SSMA-KK	0900-6900	