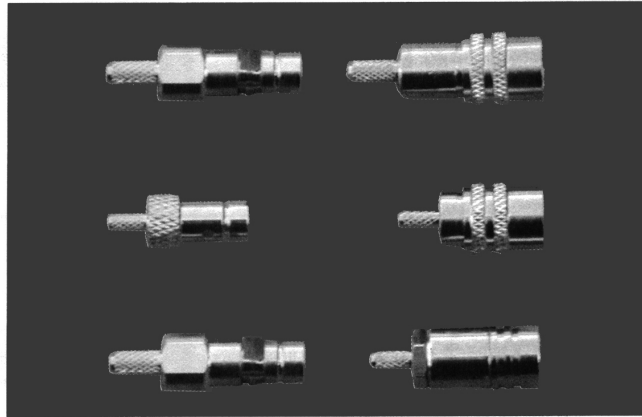


SERIES SMZ RF COAXIAL CONNECTORS



Series SMZ push-pull self-latching style RF coaxial connector is changed based on series SMB.

Key performance

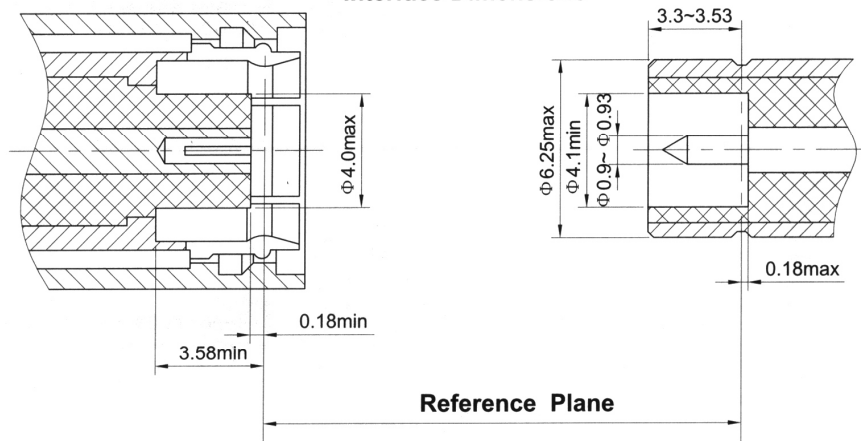
Characteristic Impedance : 50 Ω
 Frequency range : 0~4GHz
 Contact resistance :
 Center conductor $\leq 6.0m\ \Omega$
 Out conductor $\leq 2.0m\ \Omega$
 Insulation resistance : $\geq 1000M\ \Omega$
 Insulator voltage withstanding : 1000V
 VSWR : ≤ 1.30
 Connector durability :500 cycles

Applicable spec/std : GJB681A (MIL-C-39012)

Material

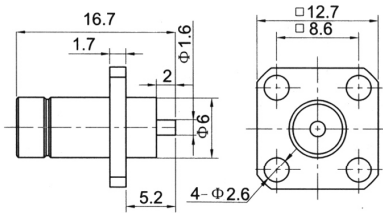
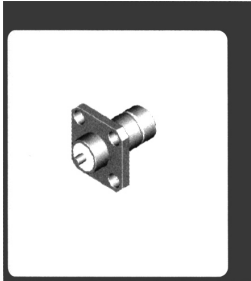
Center contacts:
 Male---brass, gold plated.
 Female---beryllium copper, gold plated
 Bodies other metal parts:
 brass, gold plated
 Insulators: Teflon
 Crimp ferrule: copper, nickel plated.
 Gasket and seal rings: silicone rubber
 Heat-shrink tubing: thermofit plastic.

Interface Dimensions

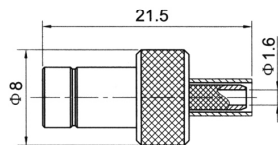


SMZ SERIES

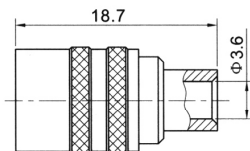
CERNEX, Inc.



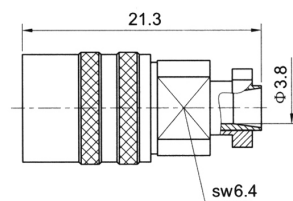
Type	part number	Note
SMZ-JFD	2110-0000	



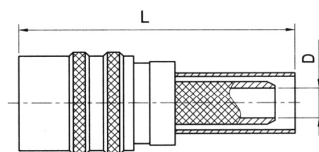
Type	part number	suitable cable	Note
SMZ-J3	2110-6500	3	



Type	part number	Note
SMZ-KB3	2120-6600	



Type	part number	Note
J.SMZ-K5	2120-6502	



Type	part number	L	D	Note
SMZ-K4Y	2120-6501	30.2	Φ2.3	
SMZ-K5Y	2120-6500	28.5	Φ3.1	