

## SERIES SMP RF COAXIAL CONNECTORS



Series SMP is a push-on and snap-on style connector. The advantages are miniature size, light weight, convenient usages and high frequency range. In its snap-on configuration, the SMP interface is available in two levels of detent each with different mate and de-mate forces. The two levels are full detent and limited detent.

### Key performance

Characteristic Impedance :  $50 \Omega$   
 Frequency range : 0~26.5 GHz  
 Contact resistance :  
     Center conductor  $\leq 6.0m \Omega$   
     Out conductor  $\leq 2.0m \Omega$   
 Insulation resistance :  $\geq 1000M \Omega$   
 Insulator voltage withstanding : 500V  
 VSWR :  $\leq 1.25$   
 Connector durability : 500 cycles

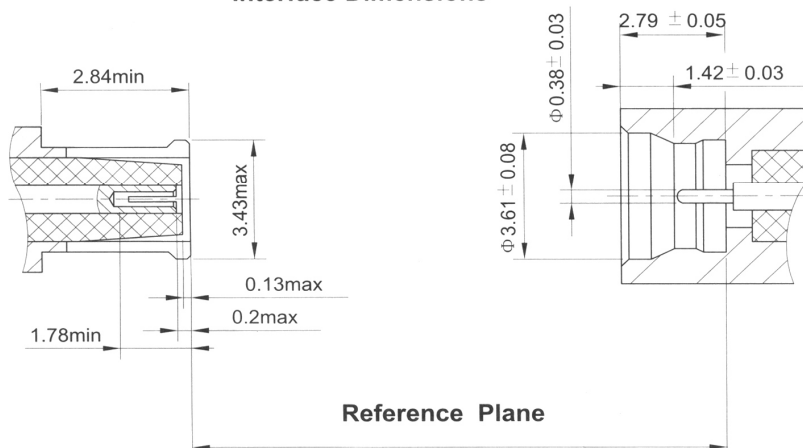
Application spec/std.: GJB681A/MIL-C-39012/CECC22340

Applicable sc MIL-C-39012

### Material

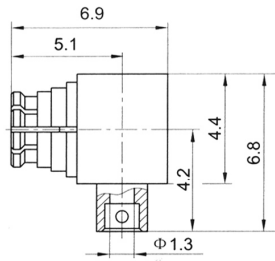
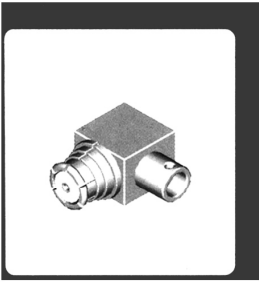
Center contacts:  
     Male---brass, gold plated.  
     Female---beryllium copper, gold plated  
 Bodies and other metal parts:  
     brass, gold plated  
 Insulators: Teflon  
 Crimp ferrule: copper, nickel plated.  
 Gasket and seal rings: silicone rubber  
 Heat-shrink tubing: thermofit plastic.

### Interface Dimensions



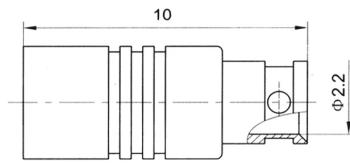
# SMP SERIES

**CERNEX, Inc.**



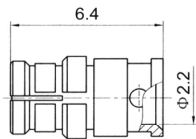
Type	part number	suitable cable	Note
------	-------------	----------------	------

SMP-KWB1	1641-6600		B1
----------	-----------	--	----



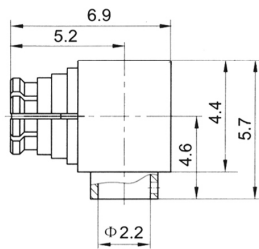
Type	part number	suitable cable	Note
------	-------------	----------------	------

SMP-JB2A	1611-6601		B2
----------	-----------	--	----



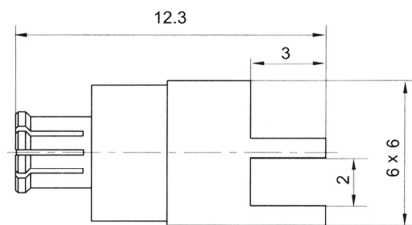
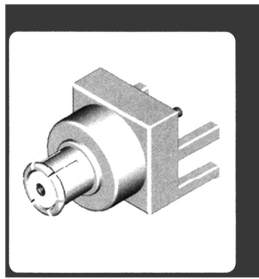
Type	part number	suitable cable	Note
------	-------------	----------------	------

SMP-KB2	1621-6600		B2
---------	-----------	--	----



Type	part number	suitable cable	Note
------	-------------	----------------	------

SMP-KWB2A	1641-6602		B2
-----------	-----------	--	----



Type	part number	Note
------	-------------	------

SMP-KHD1	1621-5801	
----------	-----------	--