

SERIES MMCX RF COAXIAL CONNECTORS



MMCX connectors are intended for use when the smallest possible physical size is required the non slotted etc. Outer contact provides low R.F. leakage while the snap-on coupling mechanism ensures that the electrical parameters are reproduced at every mating.

Key performance

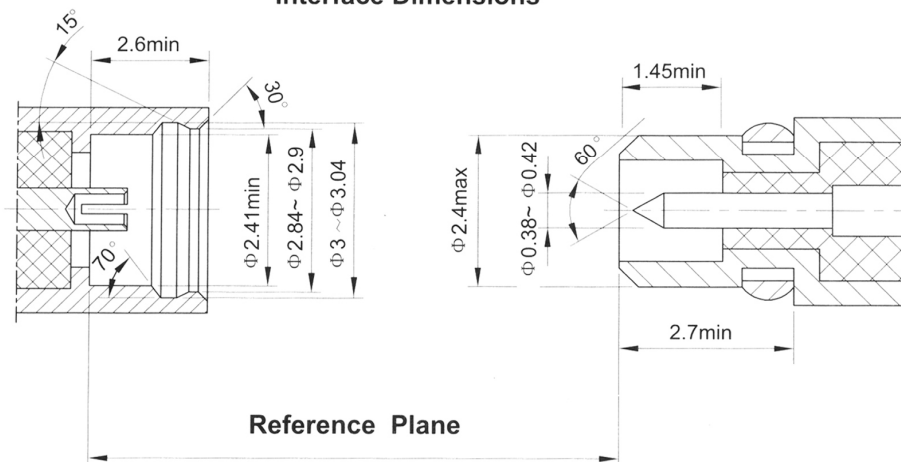
Characteristic Impedance : 50Ω
 Frequency range : 0~6 GHz
 Contact resistance :
 Center conductor $\leq 10.0m \Omega$
 Out conductor $\leq 5.0m \Omega$
 Insulation resistance : $\geq 500M \Omega$
 Insulator voltage withstanding : 500V
 VSWR : ≤ 1.25
 Connector durability : 500 cycles

Material

Center contacts:
 Male---brass, gold plated.
 Female---beryllium copper, gold plated
 Bodies and other metal parts:
 brass, gold plated
 Insulators: Teflon
 Crimp ferrule: copper, nickel plated.
 Gasket and seal rings: silicone rubber
 Heat-shrink tubing: thermofit plastic.

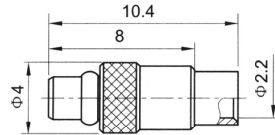
Application spec/std.: GJB681A/MIL-C-39012)/CECC22340

Interface Dimensions



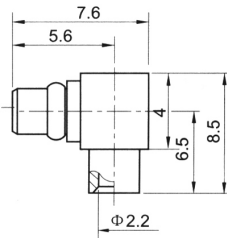
MMCX SERIES

CERNEX, Inc.



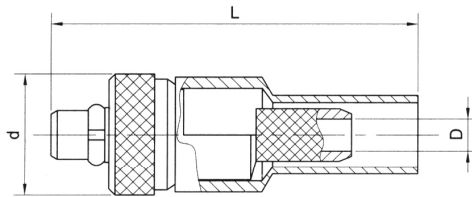
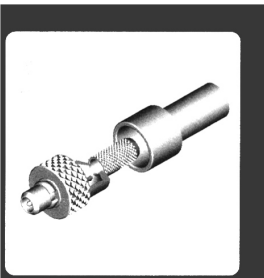
Type	part number	suitable cable	Note
------	-------------	----------------	------

MMCX-JB2	1510-6600	B2	
----------	-----------	----	--



Type	part number	suitable cable	Note
------	-------------	----------------	------

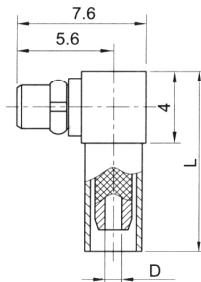
MMCX-JWB2	1530-6600	B2	
-----------	-----------	----	--



Type	part number	suitable cable	L	d	D	Note
------	-------------	----------------	---	---	---	------

MMCX-J2	1510-6500	2	11.8	$\phi 3.5$	$\phi 0.9$	
---------	-----------	---	------	------------	------------	--

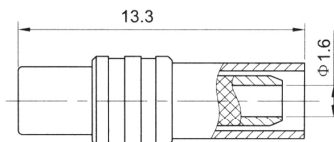
MMCX-J3	1510-6501	3	18.3	$\phi 6$	$\phi 1.6$	
---------	-----------	---	------	----------	------------	--



Type	part number	suitable cable	L	D	Note
------	-------------	----------------	---	---	------

MMCX-JW2	1530-6500	2	10.5	$\phi 0.9$	
----------	-----------	---	------	------------	--

MMCX-JW3	1530-6501	3	11.6	$\phi 1.6$	
----------	-----------	---	------	------------	--

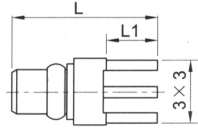


Type	part number	suitable cable	Note
------	-------------	----------------	------

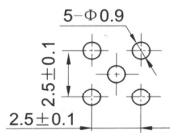
MMCX-K3	1520-6500	3	
---------	-----------	---	--

MMCX SERIES

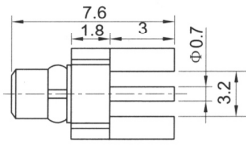
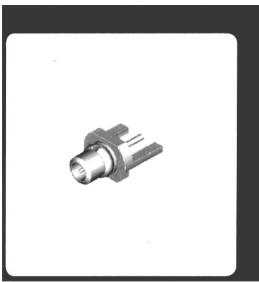
CERNEX, Inc.



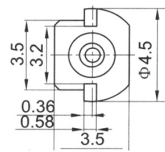
mounting hole



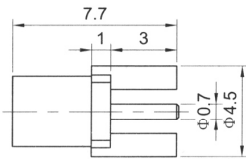
Type	part number	L	L1	Note
MMCX-JHD	1510-5800	7.7	2.9	
MMCX-JHD1	1510-5801	8.7	3.9	



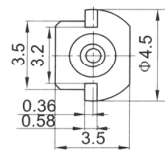
mounting hole



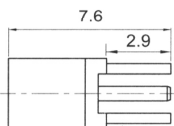
Type	part number	Note
MMCX-JHD2	1510-5802	



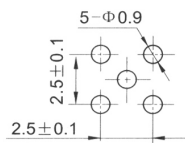
mounting hole



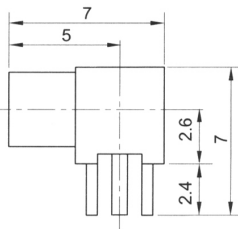
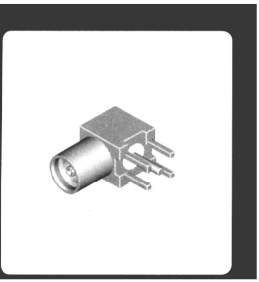
Type	part number	Note
MMCX-KHD1	1520-5801	



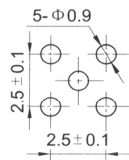
mounting hole



Type	part number	Note
MMCX-KHD2	1520-5802	



mounting hole



Type	part number	Note
MMCX-KWHD	1540-5800	