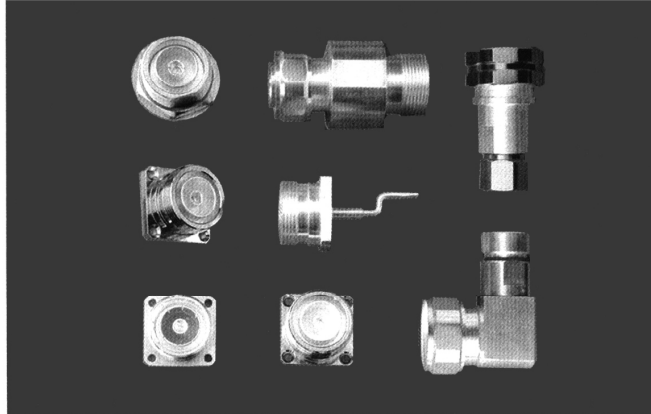


SERIES L29 (7/16) RF COAXIAL CONNECTORS



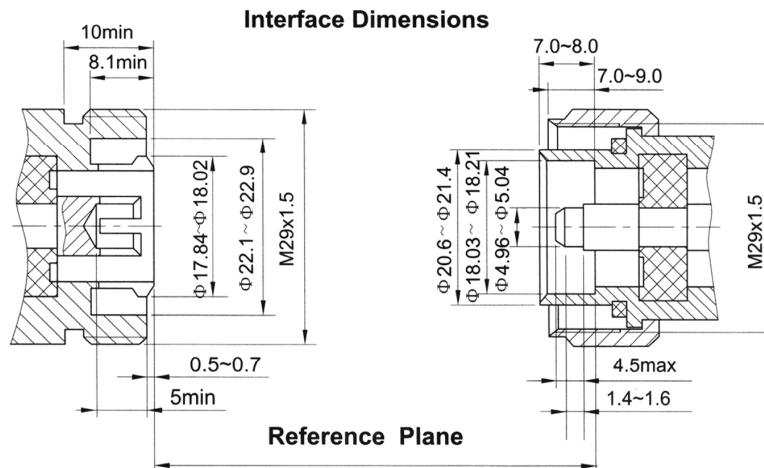
Series L29(7-16) is a screw coupling unit designed specifically to handle high power while suppressing intermodulation products. The L29(7-16) connector is most widely used in communication systems such as mobile phone base stations and radio transceivers.

Key performance

Characteristic Impedance : 50Ω
 Frequency range : 0~7.5GHz
 Contact resistance :
 Center conductor $\leq 1.0m \Omega$
 Out conductor $\leq 0.5m \Omega$
 Insulation resistance : $\geq 10000M \Omega$
 Insulator voltage withstanding : 2700V
 VSWR : ≤ 1.25
 Connector durability : 500 cycles
Applicable spec/std : IEC169-4

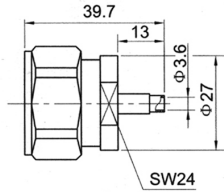
Material

Center contacts:
 Male---brass, gold plated.
 Female---phosphor, gold plated
 Bodies and other metal parts:
 brass, nickel or silver plated
 Insulators: Teflon
 Crimp ferrule: copper, nickel plated.
 Gasket and seal rings: silicone rubber
 Heat-shrink tubing: thermofit plastic.

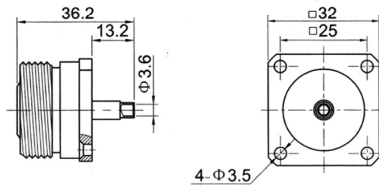


L29 (7/16) SERIES

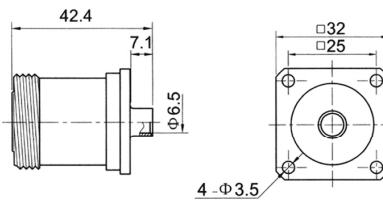
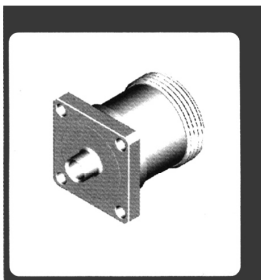
CERNEX, Inc.



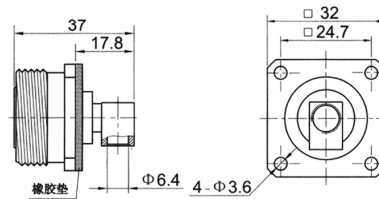
Type	part number	suitable cable	Note
L29-JB3	1212-6601	B3	coupling nut/ body silver plated



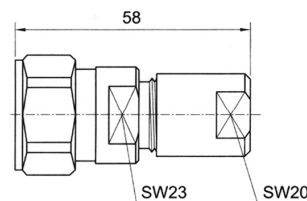
Type	part number	suitable cable	Note
L29-KFB3	1222-1601	B3	body, silver plated



Type	part number	suitable cable	Note
L29-KFB5A	1222-1603	B5A	body, silver plated



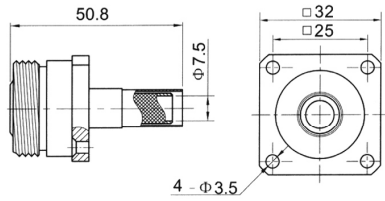
Type	part number	suitable cable	Note
L29-KFWB5A	1246-0001	B5A	Body, SUCO plated
L29-KFWB5A-1	1242-1602	B5A	Body, silver plated



Type	part number	suitable cable	Note
L29-J8B	1216-6501	8	coupling nut, body, SUCO plated

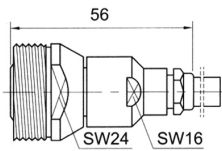
L29 (7/16) SERIES

CERNEX, Inc.



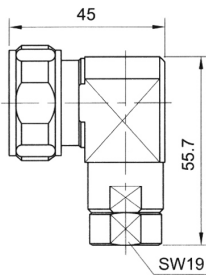
Type part number suitable cable Note

L29-KF213	1221-1701	7	body nickel plated
-----------	-----------	---	--------------------



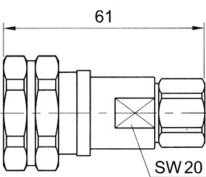
Type part number suitable cable Note

L29-K501	1222-6701	501	body nickel plated center conductor, without solder
L29-K511	1221-6702	511	body nickel plated center conductor, without solder



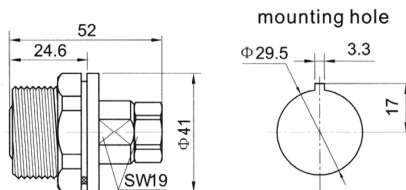
Type part number suitable cable Note

L29-JW533	1232-6701	533	coupling nut/body silver plated center conductor, without solder
-----------	-----------	-----	---



Type part number suitable cable Note

L29-J533A	1212-6702	533	body, silver plated coupling nut, nut, nickel plated center conductor, without solder
-----------	-----------	-----	---

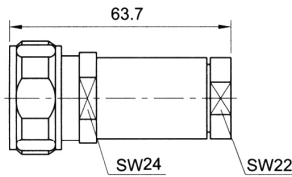


Type part number suitable cable Note

L29-KY533	1212-6702	533	body, silver plated center conductor, without solder
-----------	-----------	-----	---

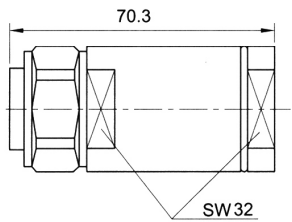
L29 (7/16) SERIES

CERNEX, Inc.



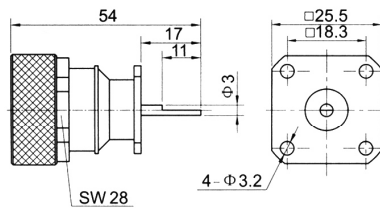
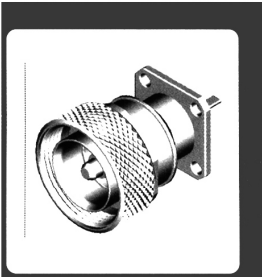
Type part number suitable cable Note

L29-J534 1211-6701 534 coupling nut, nut, silver plated
body nickel plated



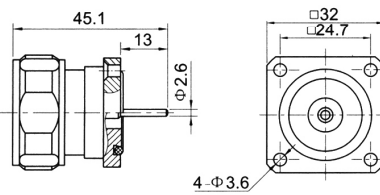
Type part number suitable cable Note

L29-J554 1211-6703 554 coupling nut/body nickel plated
silver plated



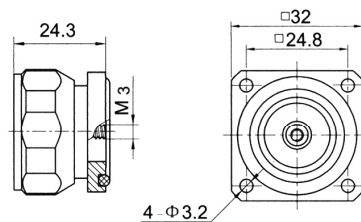
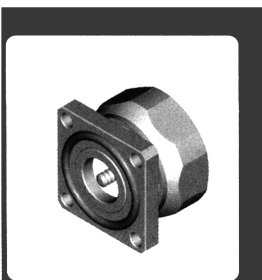
Type part number suitable cable Note

L29-JFD5 1211-0005 coupling nut/body nickel plated



Type part number suitable cable Note

L29-JFD10 1211-0010 coupling nut, body, SUCO plated

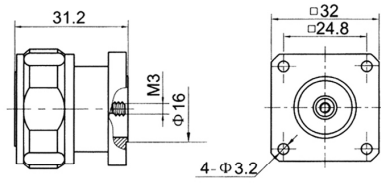


Type part number suitable cable Note

L29-JFD12 1212-0001 body, silver plated
coupling nut, nickel plated

L29 (7/16) SERIES

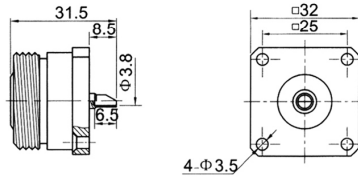
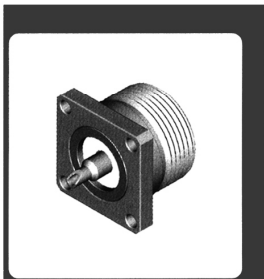
CERNEX, Inc.



Type part number suitable cable Note

L29-JFD14 1212-0002

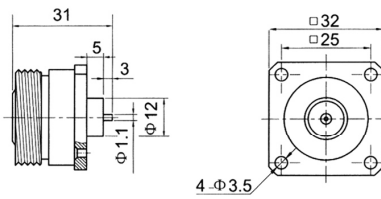
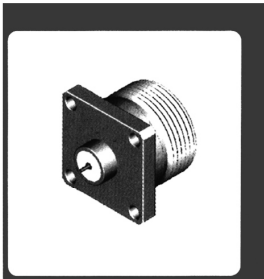
body, silver plated
coupling nut, nickel plated



Type part number suitable cable Note

L29-KF 1221-1901

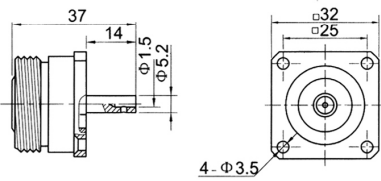
body, nickel plated



Type part number suitable cable Note

L29-KFD 1221-0001

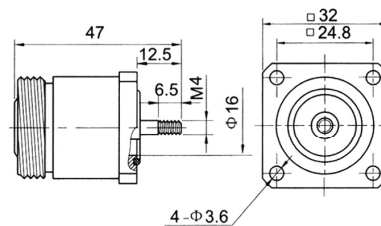
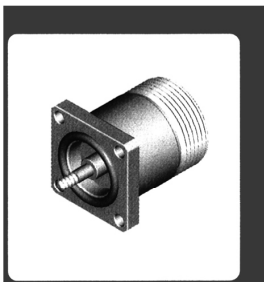
body, nickel plated



Type part number suitable cable Note

L29-KFD2 1202-0002

body, silver plated



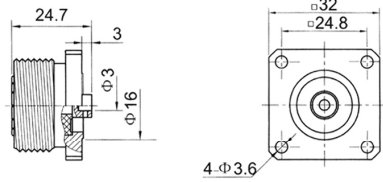
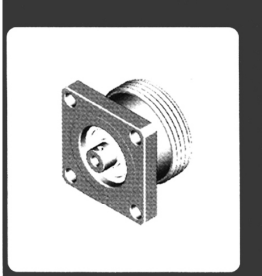
Type part number suitable cable Note

L29-KFD5 1222-0005

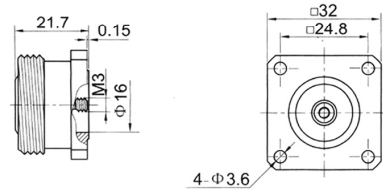
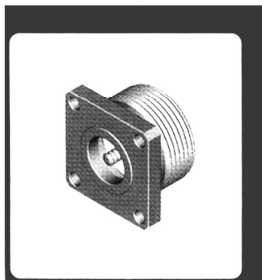
silver plated

L29 (7/16) SERIES

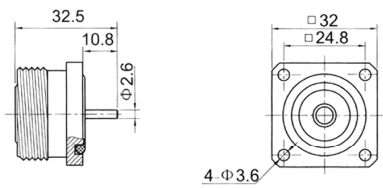
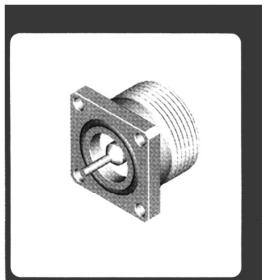
CERNEX, Inc.



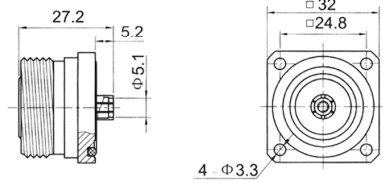
Type	part number	suitable cable	Note
L29-KFD20	1211-0001		steel flange body SUCO plated



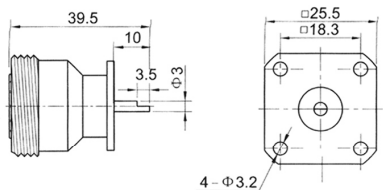
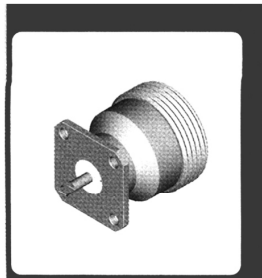
Type	part number	suitable cable	Note
L29-KFD21	1226-0003		SUCO plated



Type	part number	suitable cable	Note
L29-KFD23	1226-0004		Body, SUCO plated



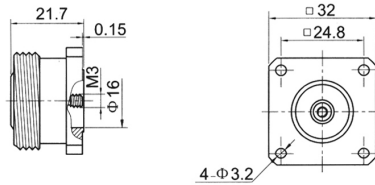
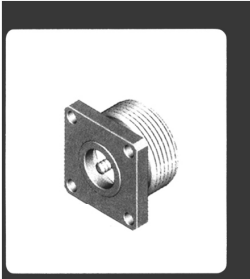
Type	part number	suitable cable	Note
L29-KFD24	1222-0010		body, silver plated



Type	part number	suitable cable	Note
L29-KFD25	1221-0014		body nickel plated

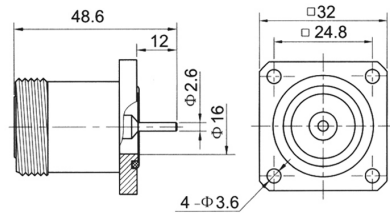
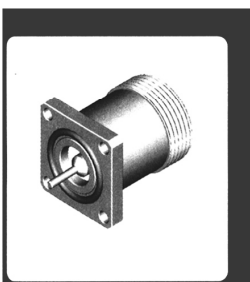
L29 (7/16) SERIES

CERNEX, Inc.



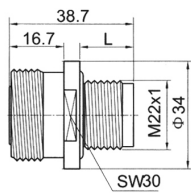
Type part number suitable cable Note

L29-KFD26 1222-0010 silver plated



Type part number suitable cable Note

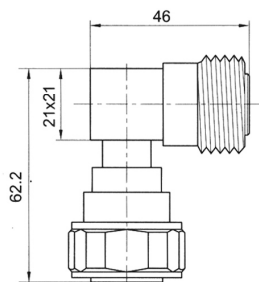
L29-KFD28 1226-0005 body, SUCCO plated



Type part number suitable cable L Note

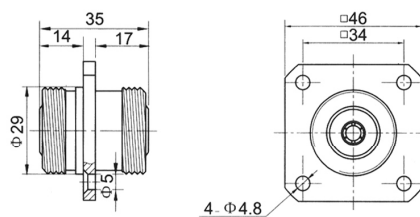
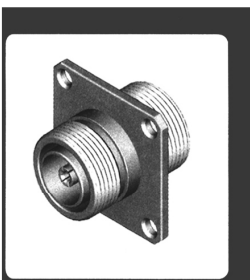
L29-KYD1 1222-2801 17 silver plated

L29-KYD1A 1222-2802 17.2 silver plated



Type part number suitable cable Note

L29-JWK 1202-6904 Body/coupling, silver plated



Type part number suitable cable Note

L29-KFK1 1201-1901 nickel plated